

# BASSETT

## smarter systems Australia

COMPANY: BASSETT  
ADDRESS: LEVEL 11, 44 MARKET STREET  
SYDNEY, NSW, 2000

CONTACT: DENNIS CHANNON  
PHONE: +61 2 8295 7555  
FAX: +61 2 8295 7500  
WEB: www.bassett.com.au

Bassett Consulting Engineers are one of Australia's leading specialist building services consultancy firms and specialises in comprehensive integrated services for design, construction, and on-going management of major building projects.

We provide engineering core services across all fields of mechanical, electrical, fire safety, industrial, ecological sustainability and acoustic engineering. We also have an applied research division and extensive expertise in risk management.

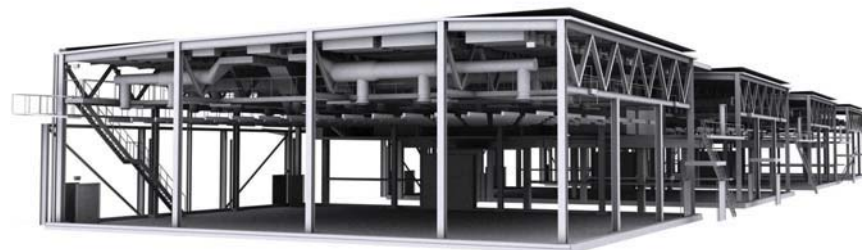
We have invested in the pursuit of technically sophisticated solutions, through integrated virtual environment software which allows interactive building energy modelling, natural ventilation analysis, mixed mode air conditioning, thermal storage systems and computational fluid dynamics to support and further enhance the calibre of mechanical engineering that we provide.

We have developed our skills in design, problem solving and value analysis to address the most complex of problems, elevating the applied science of mechanical engineering to new levels.

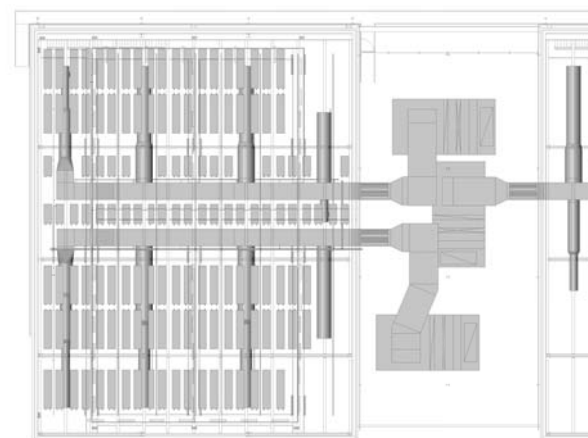
The project is a series of 4 television studios. Bassett were contracted to do the services design for Mechanical, Electrical Hydraulics and Fire.

Revit was used to detail the main catwalk areas in one studio primarily as a coordination exercise and also to visually show the client how the catwalk space and studio below will look.

The advantage gained in using Revit is that the client (using a couple of walkthroughs and perspective images) could quickly and easily get a feel for how the space would look and if it would work for them without the need of looking through 20 or 30 drawings.

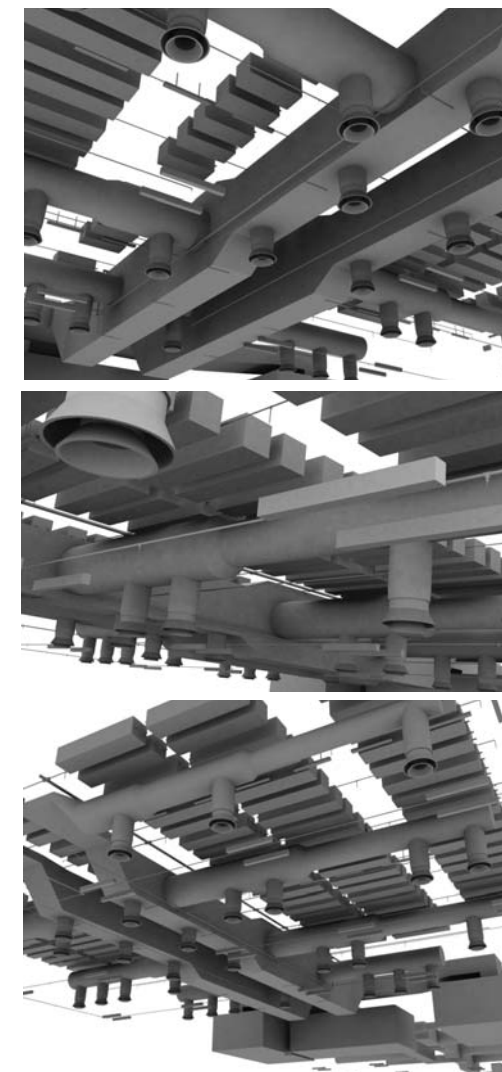


The main advantage we gained from Revit was it highlighted areas that were lacking in design during the drafting process. This resulted in less back drafting. It also highlighted clashes between services and structure on the fly during the drafting process eliminating the need to overlay structural and services drawings to ensure everything was coordinated.



KarelCAD gave Bassett the initial Revit training and also over a 3 day period helped out with the implementation, setting up company standards, title blocks etc.

KarelCAD helped us achieve the results on the studios with their technical support in building families and on using worksets.



REVIT MEP